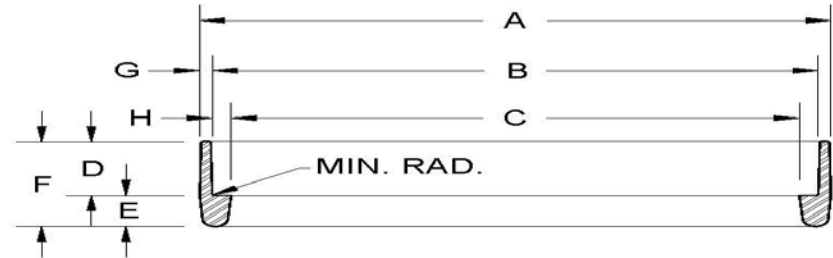
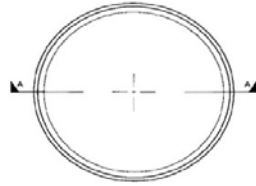
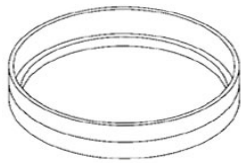


## OUTSIDE FIT CUTTING SHOES



Specification: ASTM A27/ASTM A148  
 Other size and grade can be produced; subject to agreement.

Code	Specification and Grade	Fit Pipe			A		B		C		D		E		F		G		H		Weight (kgs/ea)
		O.D. (Inch)	O.D. (mm)	Max. Wall (mm)	Inch	mm	Inch	mm	Inch	mm	Inch	mm	Inch	mm	Inch	mm	Inch	mm			
CND120CS	ASTM A27 GR.65-35	12.75	323.85	14.3	14.00	355.6	13.00	330.2	11.625	295.3	3.00	76.2	2.00	50.8	5.00	127.0	0.50	12.7	0.69	17.5	20.48
CND140CS	ASTM A27 GR.65-35	14	355.6	14.3	15.25	387.4	14.25	362.0	12.875	327.0	3.00	76.2	2.00	50.8	5.00	127.0	0.50	12.7	0.69	17.5	22.44
CND160CS	ASTM A27 GR.65-35	16	406.4	14.3	17.25	438.2	16.25	412.8	14.875	377.8	3.00	76.2	2.00	50.8	5.00	127.0	0.50	12.7	0.69	17.5	25.57
CND180CS	ASTM A27 GR.65-35	18	457.2	15.9	19.25	489.0	18.25	463.6	16.750	425.5	3.00	76.2	2.00	50.8	5.00	127.0	0.50	12.7	0.75	19.1	29.55
CND200CS	ASTM A27 GR.65-35	20	508	15.9	21.50	546.1	20.50	520.7	18.750	476.3	3.00	76.2	2.00	50.8	5.00	127.0	0.50	12.7	0.88	22.2	35.10
CND240CS	ASTM A27 GR.65-35	24	609.6	19.1	25.25	641.4	24.25	616.0	22.500	571.5	3.00	76.2	2.00	50.8	5.00	127.0	0.50	12.7	0.88	22.2	41.54
CND300CS	ASTM A27 GR.65-35	30	762	25.4	31.25	793.8	30.25	768.4	28.000	711.2	3.00	76.2	2.00	50.8	5.00	127.0	0.50	12.7	1.13	28.6	57.55
CND360CS	ASTM A27 GR.65-35	36	914.4	25.4	37.25	946.15	36.25	920.75	34.00	863.60	3.00	76.20	2.00	50.80	5.00	127.00	0.50	12.70	1.13	28.6	69.07
CND480CS	ASTM A27 GR.65-35	48	1219.2	25.4	49.25	1250.95	48.25	1225.55	46.00	1168.40	3.00	76.20	2.00	50.80	5.00	127.00	0.50	12.70	1.13	28.6	92.10